

# Dandenong Veterinary Hospital

Guaranteed Preventative Petcare



## Your Pet's Lifetime Dental Care Plan...

Are you planning to protect those teeth? [www.dvh.com.au](http://www.dvh.com.au)

### Where regular care is crucial...

In veterinary medicine, the most common disease we see is an avoidable one; dental disease.

**Around 80% of dogs and 70% of cats over 3 years of age have dental disease.**

We all know how important dental health is to us humans, and our pets are just the same. We are very passionate about dental health as it has *huge* impacts on your pet's health, comfort and longevity—in other words: **pets with healthy teeth on average live happier, longer, healthier lives with less pain and disease, and we all want that!**

We check teeth very carefully each visit to pick up and address problems early, working closely with you to develop an individual plan for maintaining healthy teeth and gums.

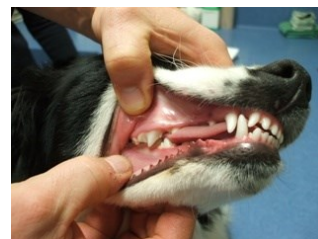
### Dental disease; the hidden enemy

Dental disease in our pets is often a 'silent' disease. Many animals show little or no obvious symptoms until the disease is well advanced, which means that once they demonstrate signs such as obvious pain or bad breath, the treatment options may be limited to major oral surgery including tooth extractions. **We can visualise dental disease much earlier than this, when examining teeth during consultation,** and it is very important to start treatment in the early phase to prevent the disease progressing and keep teeth healthy.

Animals hide long-term dental pain very well, and they have often learned to eat using only the teeth in the mouth

which are not painful or loose. On the surface, your pet appears to behave in a normal fashion, and you may have no idea they are living day-to-day with pain.

Importantly, dental disease is not just a disease of the mouth. The bacteria which live in the deep pockets formed next to unhealthy teeth can enter the bloodstream and travel around the body, and they also produce toxins which can enter the bloodstream. Infection of the jaw bone can happen too.



**Regular check ups are essential to allow early intervention and help avoid decay and extractions**

### Professional Dental Cleaning

Even with the best dental homecare plans, it is inevitable that many of our pets will need to have professional cleaning performed to keep their teeth healthy, and for some, this will be needed on a regular basis. Professional cleaning, conducted under a light general anaesthetic, removes the build up of tartar and calculus that has accumulated. If left, it will begin to cause irreversible dental disease. Xrays are also taken to examine the teeth below the gum line to ensure problems are picked up as early as possible.

If your veterinarian advises that your pet needs a professional dental clean, then you should NOT WAIT until the build-up of tartar "get's worse" before scheduling the procedure. All you are doing is increasing the RISK of your pet needing surgical extractions in the future. Your pet has only one set of adult teeth; they don't grow more!

Dandenong Veterinary Hospital believes so strongly in the value of professional cleaning that we heavily subsidise the cost of our preventative dental cleaning service. There is a marked difference between the price of *preventative* dental cleaning and *surgical* dental procedures (those with severe disease, often with extractions required) which may leave you with a bill of over \$1000! Even if we ignore the expense of extracting teeth, we cannot ignore the huge impact poor dental health has had on your pet's health and wellbeing, the pain it has been causing, and the risk of disease elsewhere in the body.

Regular dental care is SO IMPORTANT

*You CAN make a difference*



#### PLAQUE

is an accumulation of food particles and bacteria on the tooth's surface, and is the initial stage of dental disease. With time, the plaque calcifies to become

#### TARTAR/CALCULUS

which is the formation of hard mineralized deposits on the tooth. Plaque and tartar lead to and promote

#### GINGIVITIS

which is infection of the gums. Gingivitis is recognized by redness and swelling of the gums around the teeth and is painful.

#### PERIODONTAL DISEASE

is disease of the structures surrounding the tooth root. It is usually irreversible and is associated with bad breath, pain when chewing, loose teeth, tonsillitis, tooth root abscessation and for some, blood poisoning (septicaemia).



*Significant tartar like this often indicates underlying periodontal disease is present*

118 Princes Highway, Dandenong, Victoria, 3175

Tel: (03) 9792 4787

Darren E Shortt Pty Ltd & JL Morse Pty Ltd

ABN: 99 629 217 531

# Lifetime Dental Care Options...

Whilst you might not be able to influence your pet's genetic predisposition for development of dental problems, you most certainly can influence what your pet puts in their mouth! You need to choose foods, treats and a home care dental plan that you can REALISTICALLY continue for life.

All these options have risks of your pet NOT ACCEPTING the treat, food or handling. Be flexible and try alternative options. The KEY is to start with SMALL STEPS and increase the exposure slowly over a period of weeks or months until your pet is familiar with it. You can understand your pet may be wary of 'change', but you should not be hesitant to **try**, as well as **persist**. Prevention is always best!



## OPTION: Dental treats: Daily to few times weekly

The CHEWING action works to remove build up of plaque. They are best given regularly to remove the soft plaque layer before it hardens to tartar/calculus. **Avoid** excess calories by overfeeding.

ORAVET CHEWS: 57% reduction in tartar and 39% less plaque build up over 28 days. Watch this 3min [video](#).

WHIMZEES: A firmer texture chew, lasting longer, reducing >48% of plaque. [pamplet](#)

VETNEX DENTAL POWDER / CHEW: [pamplet](#) Natural Seaweed compounds demonstrated to reduce bacterial biofilms & plaque

GREENIES: 54% reduction in tartar and 48% less plaque build up over 28 days. Available for cats too.

ALL NATURAL VEGGIE EARS: A low fat, chew product that is packed with vegetable goodness. A tasty and healthy option.

DENTASTIX : Average 40% reduction in tartar, must be fed daily.

CHEW TOYS: Dental chews such as the KONG branded range can be both entertaining and useful as part of a dental plan

### SOME CAUTION:

\* Deer Antlers, Pizzle sticks, Sinew/Tendon Sticks, Rawhide chews - may be more risky for obstruction, choking or bacterial contamination hazards.

\* Nylabones/Gumabones/Dentabones - Quite tough and may fracture teeth or lead to obstruction.

## OPTION: Daily Water additive: [pamplet](#)

We recommend using **Oxyfresh water additive** which fights bacterial damage from (smelly) volatile sulphur compounds (VSCs), promotes healthy gums and freshens breath. It contains Oxygene, which is a safe non-toxic molecule that neutralises odour at the source, not just masking the smell. Importantly, it is odourless and tasteless and well accepted by fussy cats and dogs.

**BENEFITS**: Easy, well accepted.

**RISKS**: None. Use in conjunction with other options.

## OPTION: Bones (cooked or raw): **not recommended**

The known risks of feeding bones combined with the availability of many safer alternatives leaves feeding of bones unnecessary and therefore **not recommended**. At present there are no benefits reported in the literature showing that bones (or natural diets) prevent or control periodontal disease. Bones *have* been shown to cause **tooth fracture, excessive tooth wear, gastric upsets, obstructions, choking, perforations and constipation** as well as **salmonellosis** and **other bacterial infections**. That said, if you desire to feed bones, avoid those which are very hard such as beef or pork, and avoid chicken as campylobacter may cause polyradiculoneuritis (nerve disease).

Whilst understanding the risks, there are limited alternative dental options for **juvenile cats**, so raw chicken wings/chicken necks are a possible option, as cats anecdotally have fewer complications. Feed DAILY to EACH SECOND day for best effects, and wash your hands well after handling raw chicken. Meat strips may also encourage chewing, however these strips need to be long enough to encourage longer chewing times.

Dental health has such a large impact on the life of your pet that we offer FREE dental checks ALL YEAR ROUND to monitor their teeth closely and work with you to tailor an individual lifetime plan. For many pets this will involve professional dental cleaning & vigilant home care. The long term benefits are *incredibly* important to your pet's wellbeing.

## EASIEST OPTION: Dental Diets: Daily

### DELICATE CARE or ROYAL CANIN brands

Specific premium quality diets with a focus on dental care.

**BENEFITS**: Easy to use, **complete, balanced premium** food. **Great value** option. Specific brands have *clinically proven* positive benefits with plaque reduction and tartar prevention usually around 40-50+% when fed alone!

BOTH products have a loyalty program of FREE bags. Buy 10-bags, get 11th bag free!

Costs: based upon '[Delicate Care Dental](#)' (@NOV 2022)

\*\* Suitable for KITTENS or food intolerance, sensitive skin & stomachs.

CAT (\$0.87/day) (4.5kg, indoor cat)

DOG \$2.19 to \$2.75+/day (5kg to 15+kg dog)

Costs: based upon '[Royal Canin Dental](#)' (@NOV 2022)

CAT \$1.70/day (4.5kg)

DOG \$2.35 to \$3.75+/day (5kg to 15+kg dog)

**RISKS**: None. 100% return policy.

## OPTION: Dental brushing: Daily

*See our website links for [Canine](#) or [Feline](#) videos*

Use a **SOFT brush** or pet tooth brush with **pet-specific** toothpaste. Toothpaste can allow a more pleasant experience.

**BENEFITS**: Not surprisingly, this is the best option for removing plaque when performed daily. Talk to us about techniques and introduction to your pet. Easiest if started when your pet is young.

**RISKS**: **Time** consuming. **Acceptance** from pets is highly variable and unpleasant experiences for pets can make this both difficult and hazardous (bites!) to owners.